



LEARNING *to* USE WOOD

WOOD PROGRAM

www.arkkitehtuuri.tkk.fi



FOREST



TREE



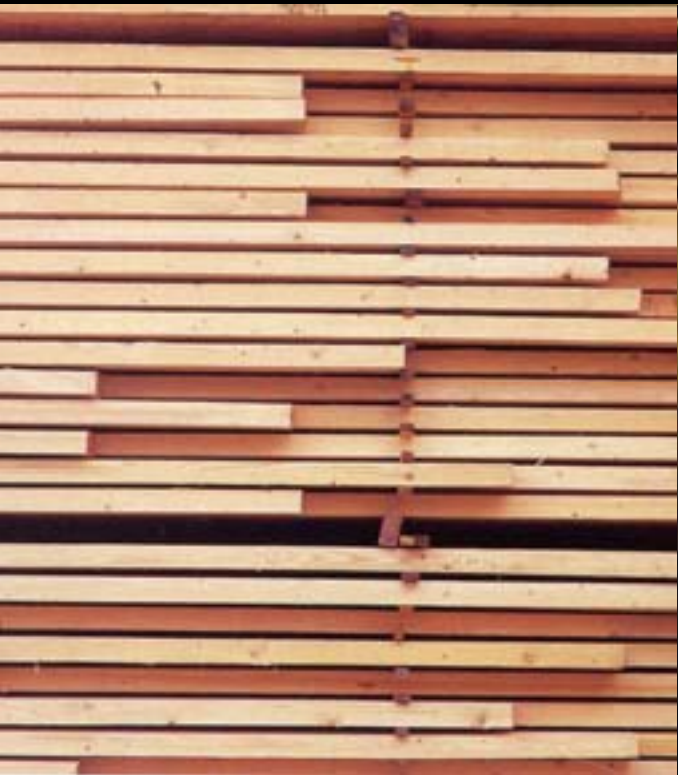
WOOD



TIMBER



INDUSTRIAL TIMBER



ENGINEERED TIMBER



TIMBER COMPONENTS



BUILDING *in* WOOD



ARCHITECTURE *in* WOOD



TRADITION

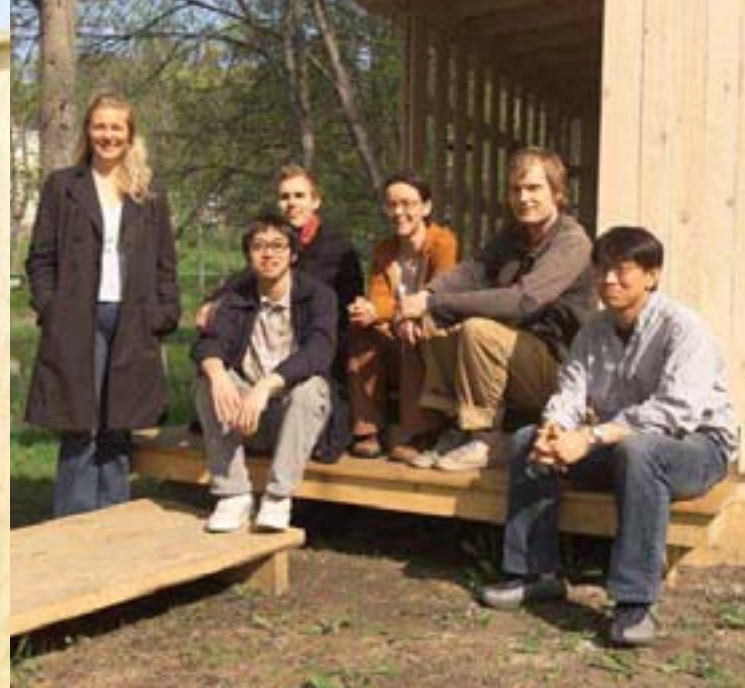


FUTURE





LEARN *by* DOING



INTERNATIONALITY (30 nationalities)

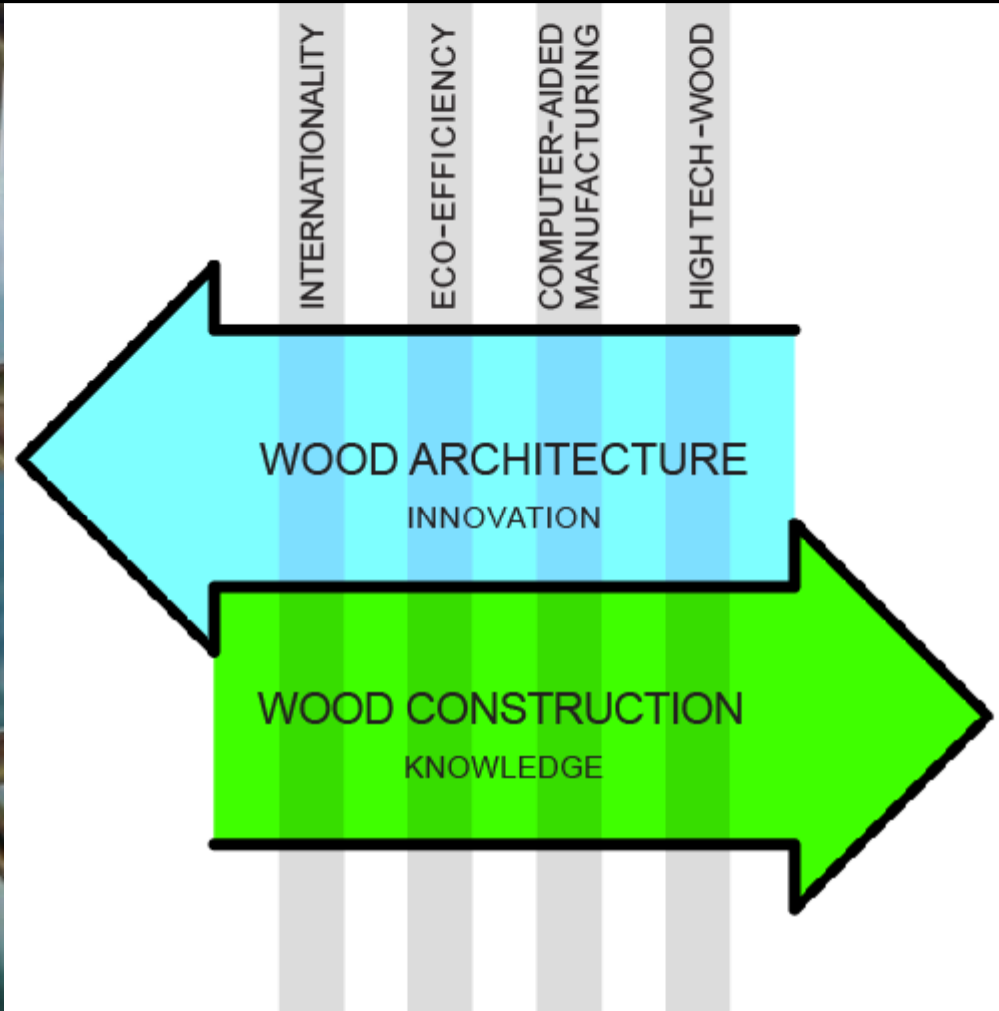


EXPERIENCE





PLAY



the STRATEGY



FORMS of WOOD











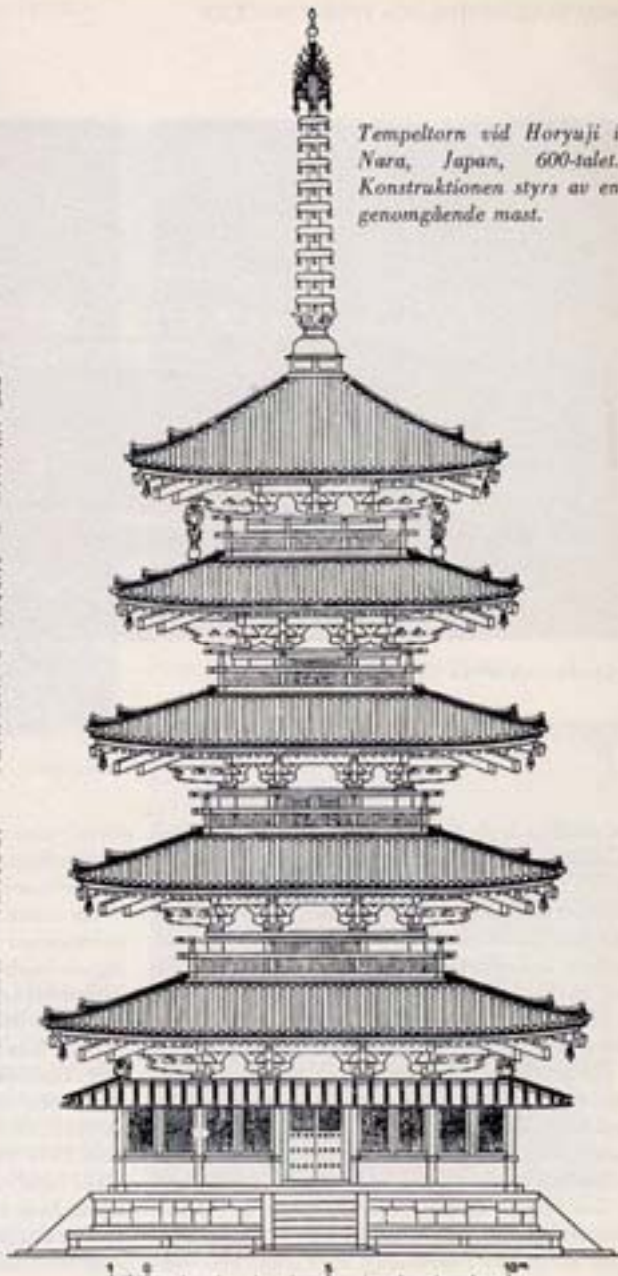
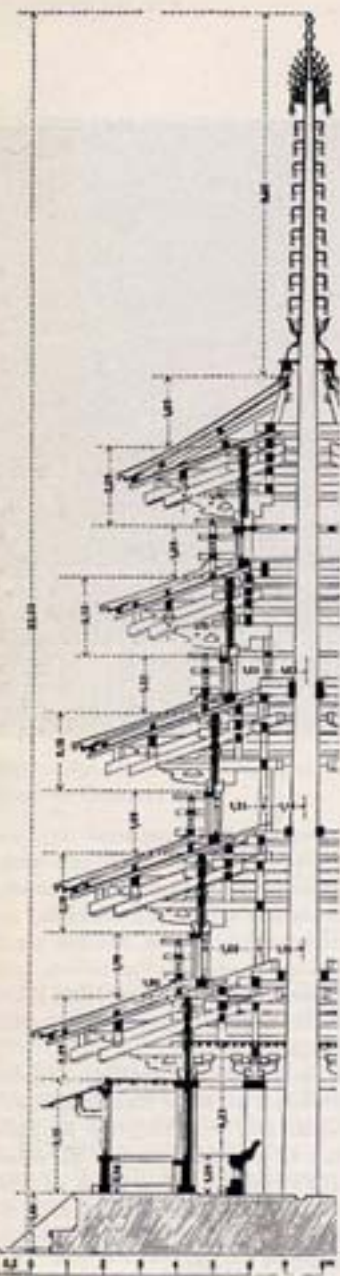




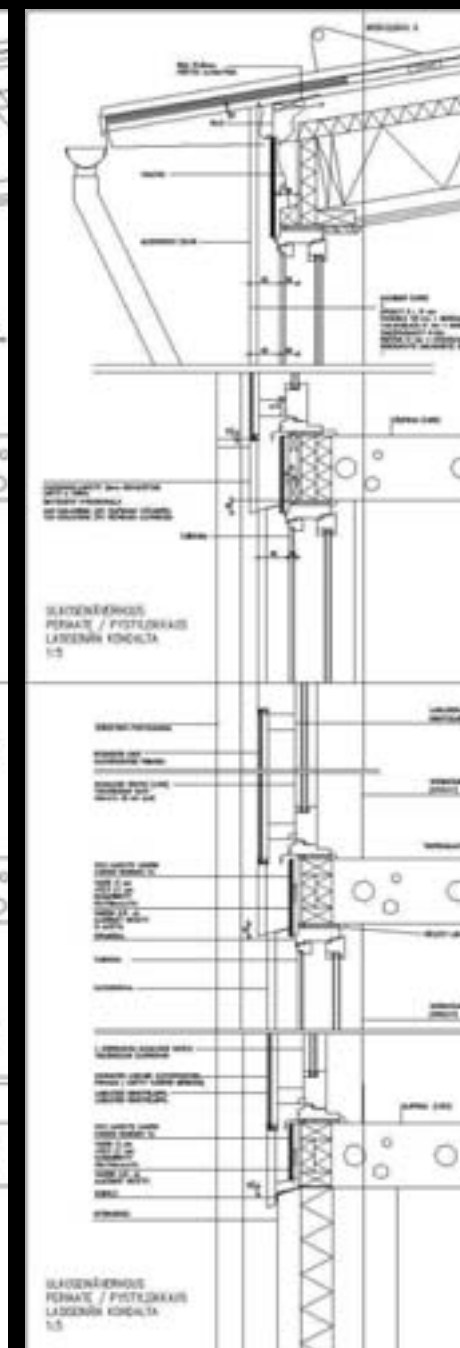
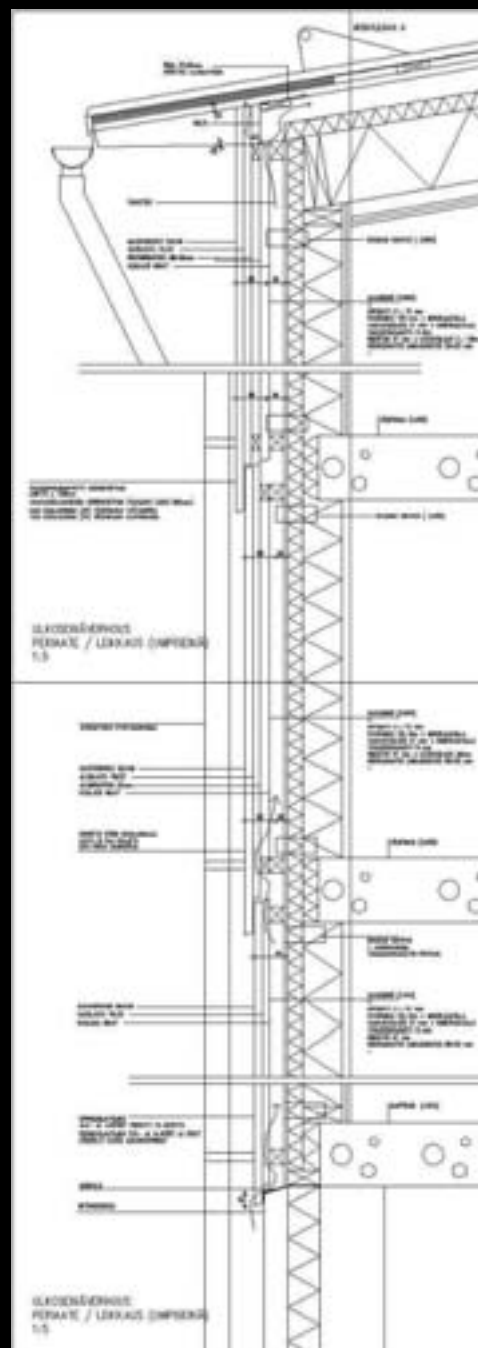








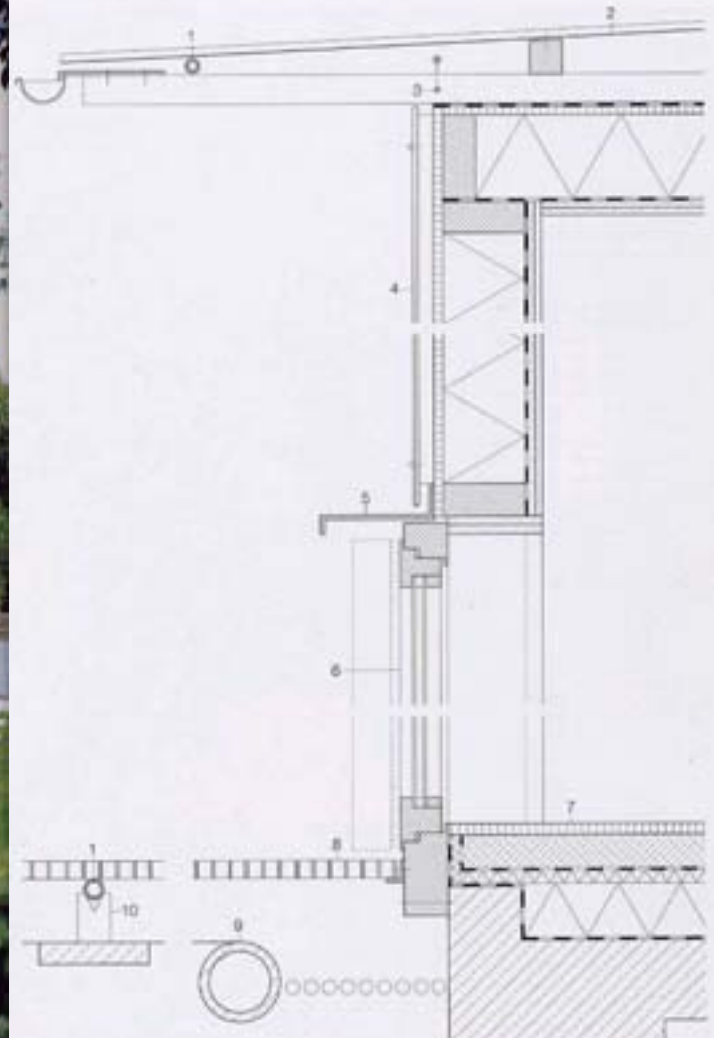
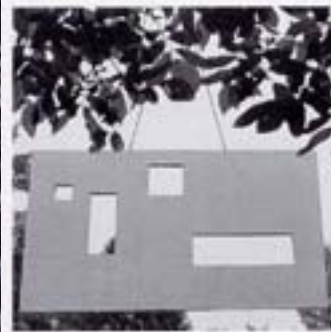
Tempeltorn vid Horyuji i Nara, Japan, 600-talet. Konstruktionen styrs av en genomgående mast.









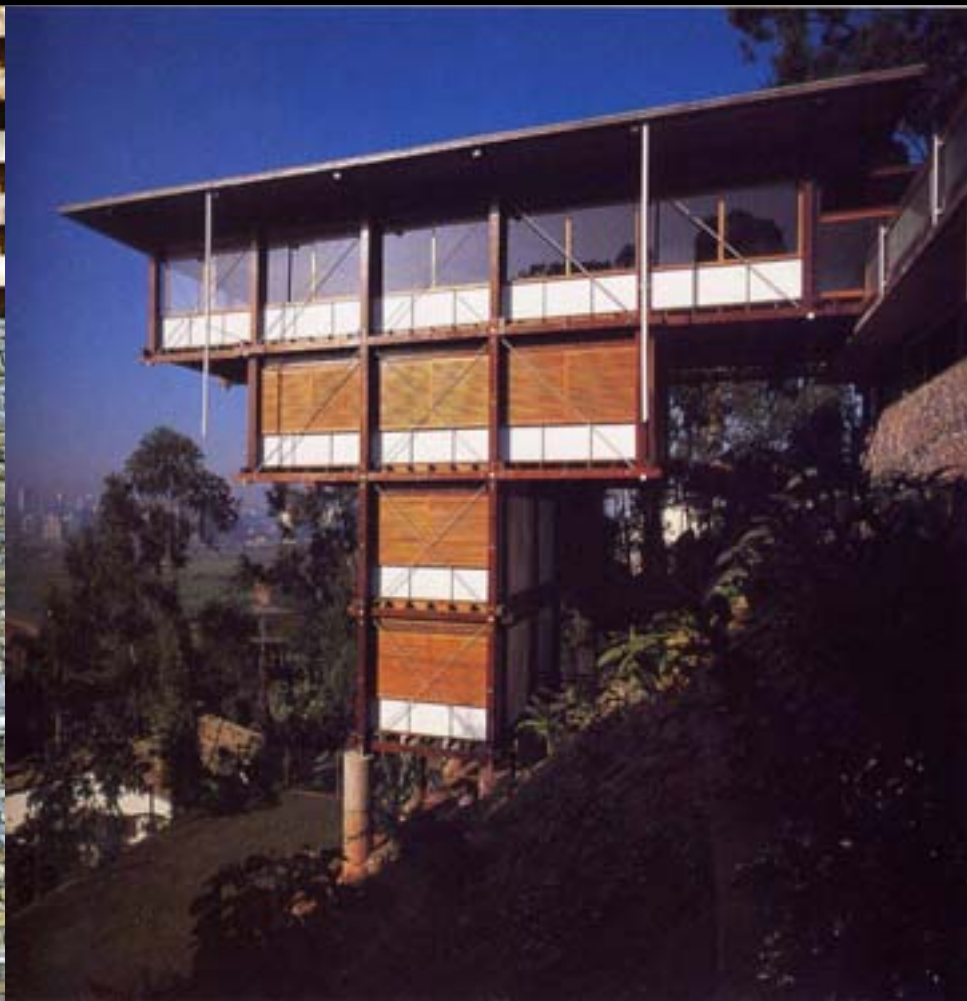


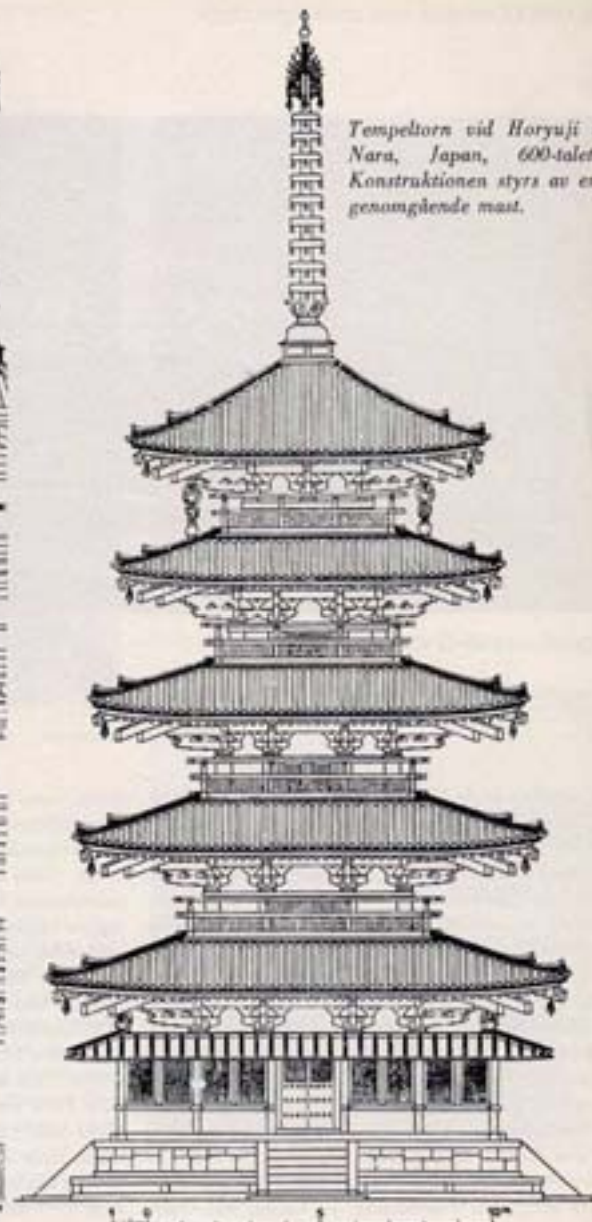












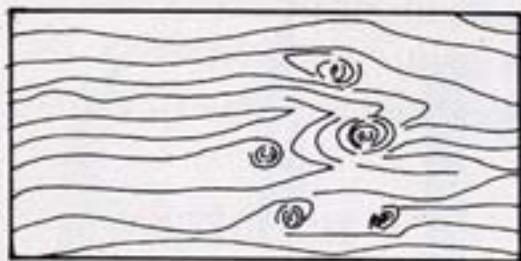
Tempeltorn vid Horyuji i Nara, Japan, 600-tal. Konstruktionen styrs av en genomgående mast.



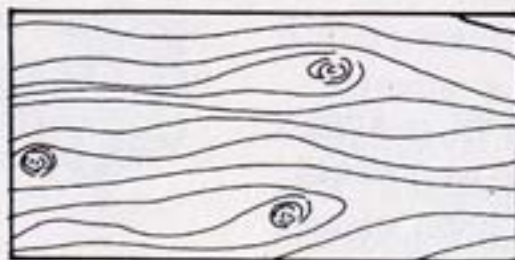








Oksaryhmä



Hajaoksat



Pyöreä oksa



Soikea oksa



Särämäoksa



Lehtioksa



Helmioksa



Sarvioksa



Viiksioksa





A close-up photograph of a woodworking project. In the foreground, a wooden mallet with a light-colored handle and a rectangular head lies on a dark grey workbench. The mallet head has the letters 'TKK' carved into it. The workbench is covered with numerous thin, curly wood shavings. In the background, a piece of light-colored wood is being worked on, with a green-handled tool visible. The overall scene is well-lit, highlighting the textures of the wood and shavings.

WOOD PROGRAM

www.arkkitehtuuri.tkk.fi

TKK - Helsinki University of Technology - Department of Architecture